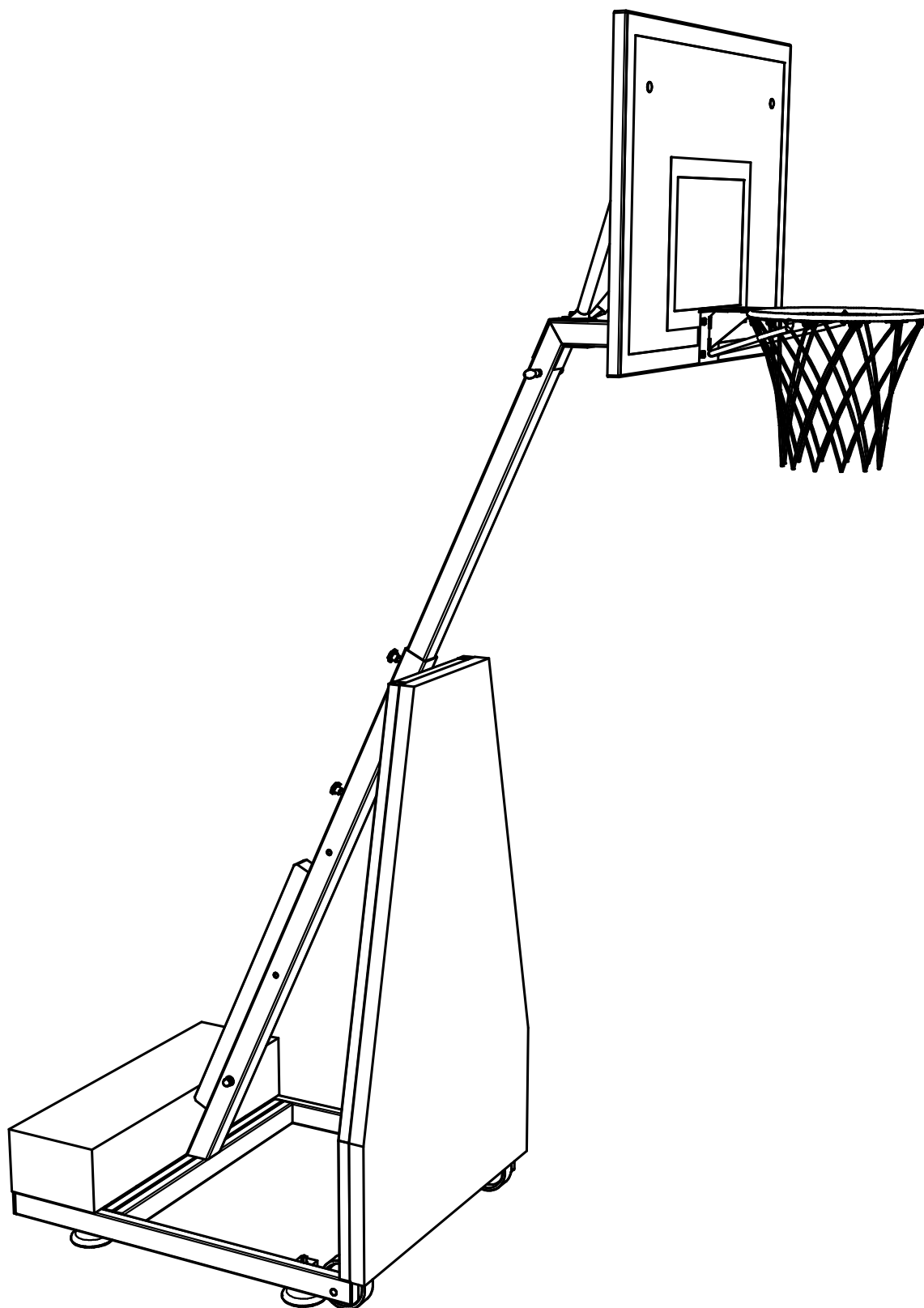
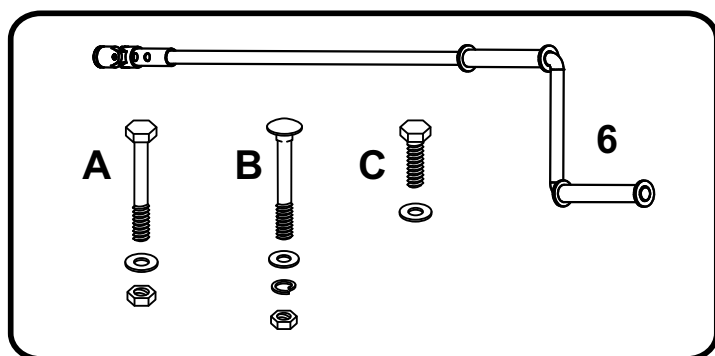
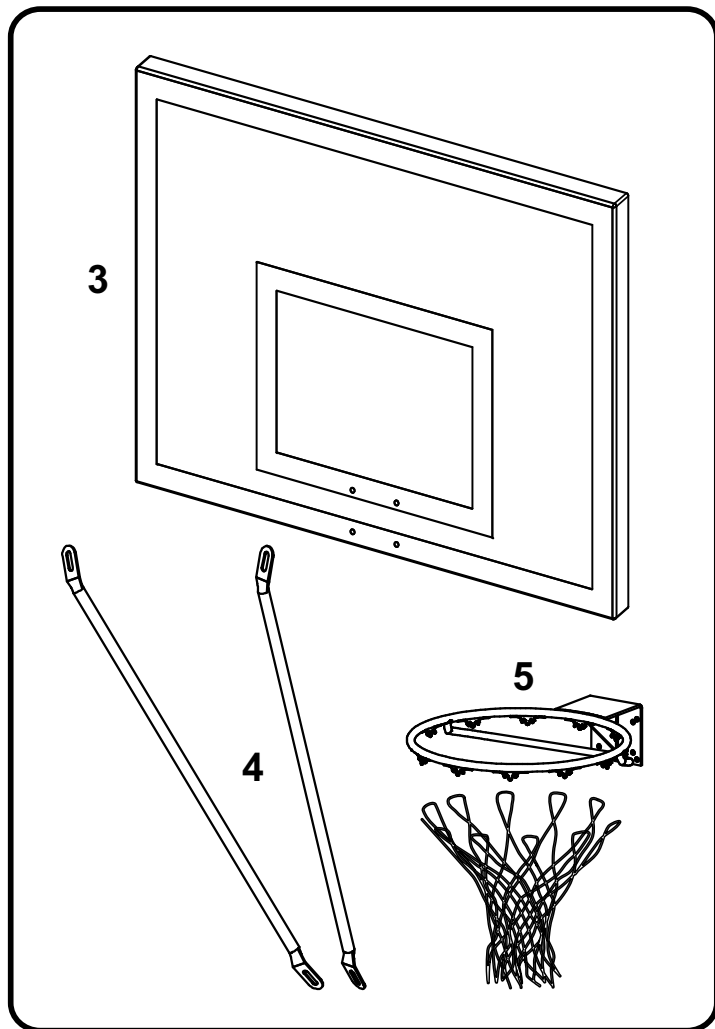
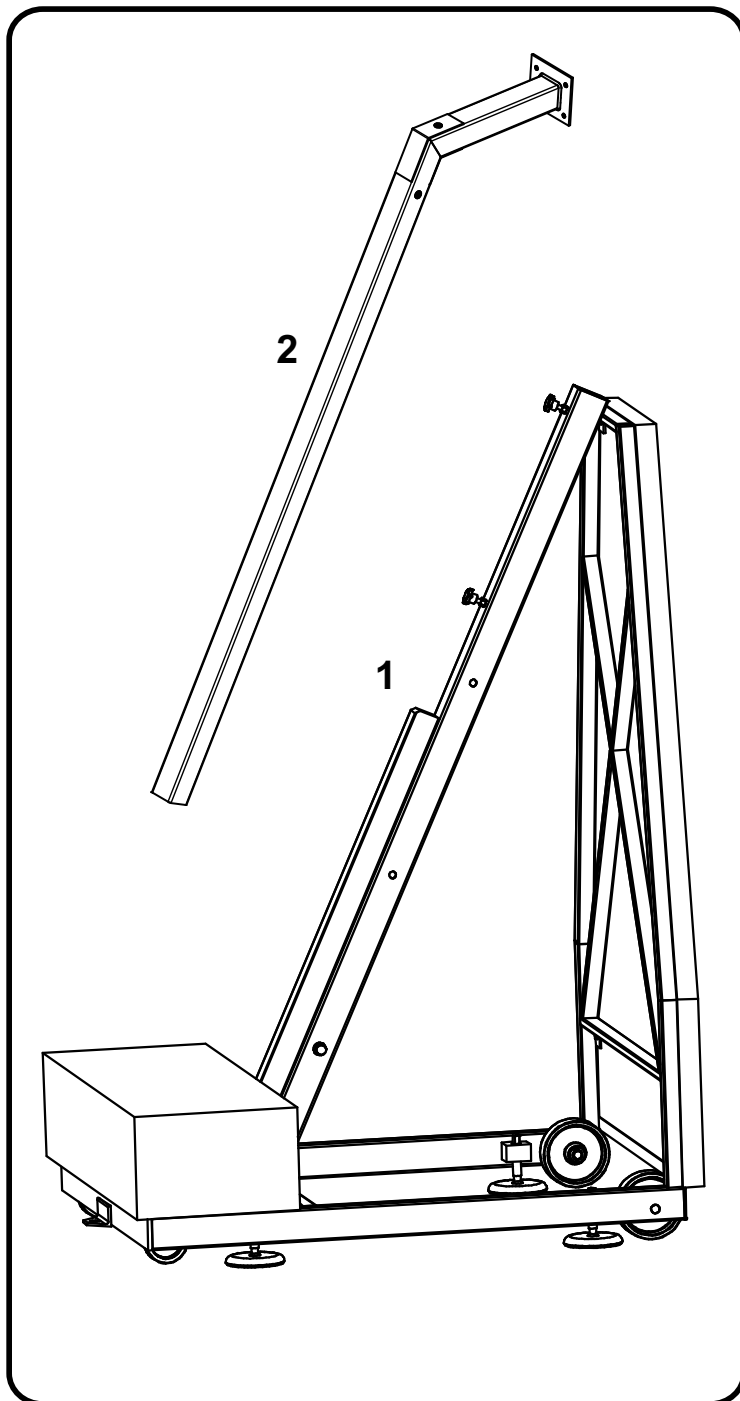


Model 770-200

Zestaw treningowy / Training set

XI/12

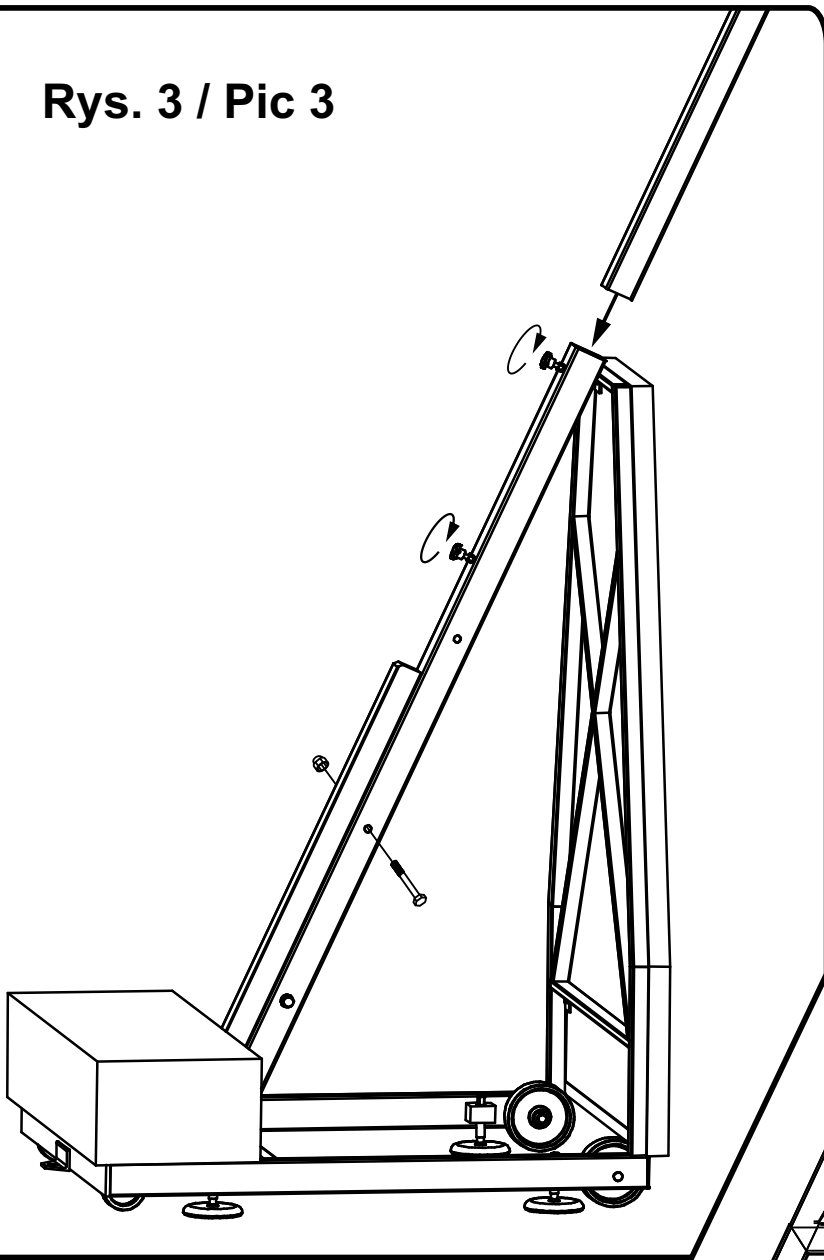




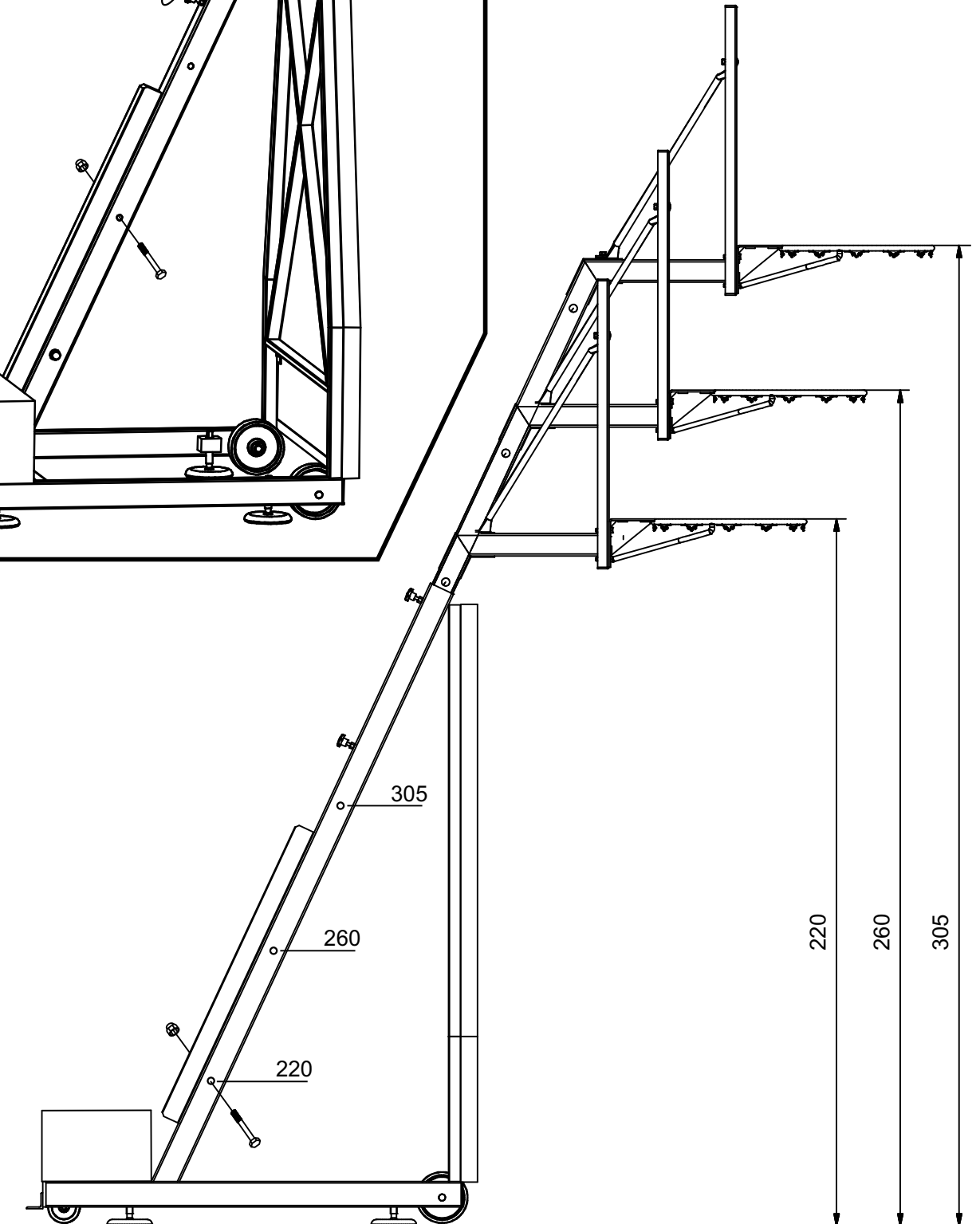
Wykaz części / List of parts

nr/no.	Nazwa / Description	szt./pcs.
1	Podstawa / Base	1
2	Wysięg / Extension	1
3	Tablica / Backboard	1
4	Podpory tablicy / Backboard's support	2
5	Obręcz z siatką / Goal with net	1
6	Korba / Crank handle	1
A	Śruba M10x80 / Screw M10x80	4
A/C	Podkładka 10,5 / Washer 10,5	5
A	Nakrętka M10 / Nut M10	4
B	Śruba zamkowa M8x80 / Lock screw M8x80	2
B	Podkładka 8,5 / Washer 10,5	2
B	Podkładka sprężysta 8,2 / Spring washer 8,2	2
B	Nakrętka M8 / Nut M10	2
C	Śruba M10x35 / Washer	1

Rys. 3 / Pic 3



Rys. 4 / Pic 4



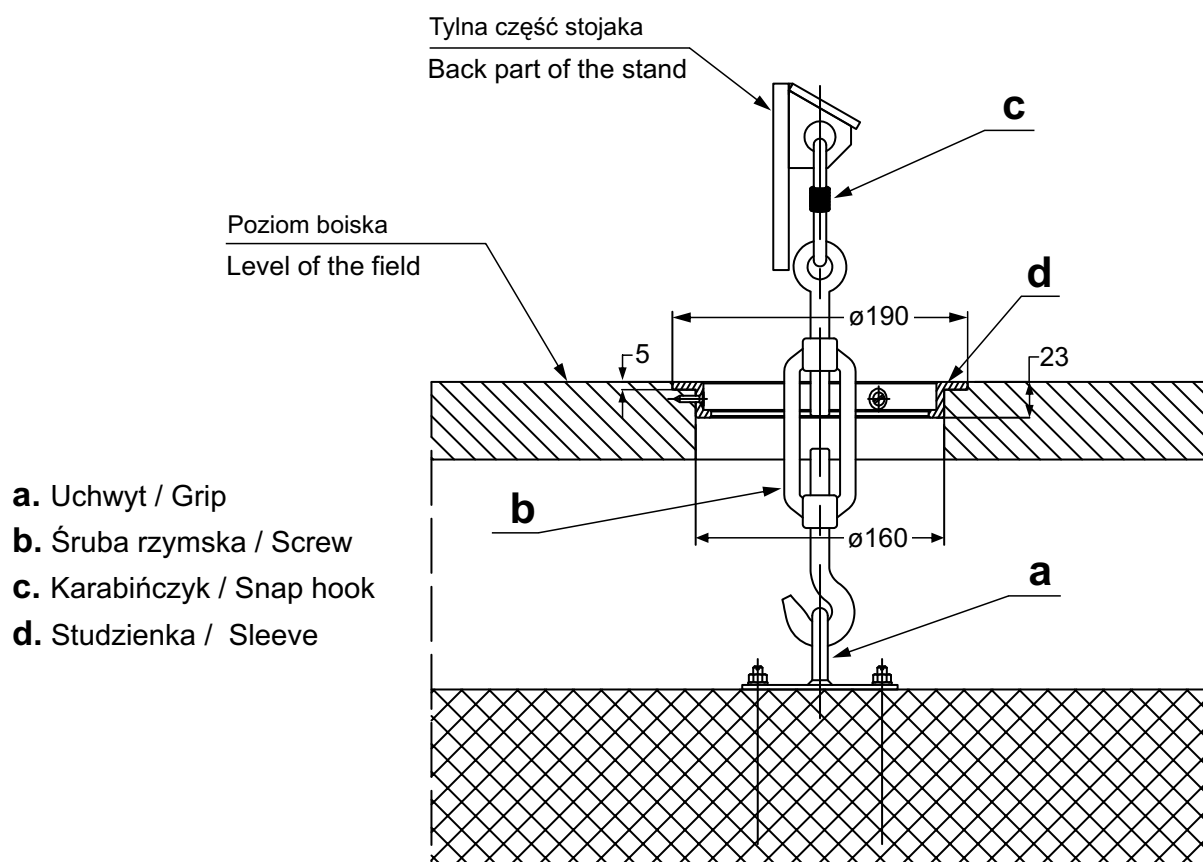
**Zaleca się kotwienie zestawu w studzience /
/ It is recommended to fix the unit into the sleeve.**

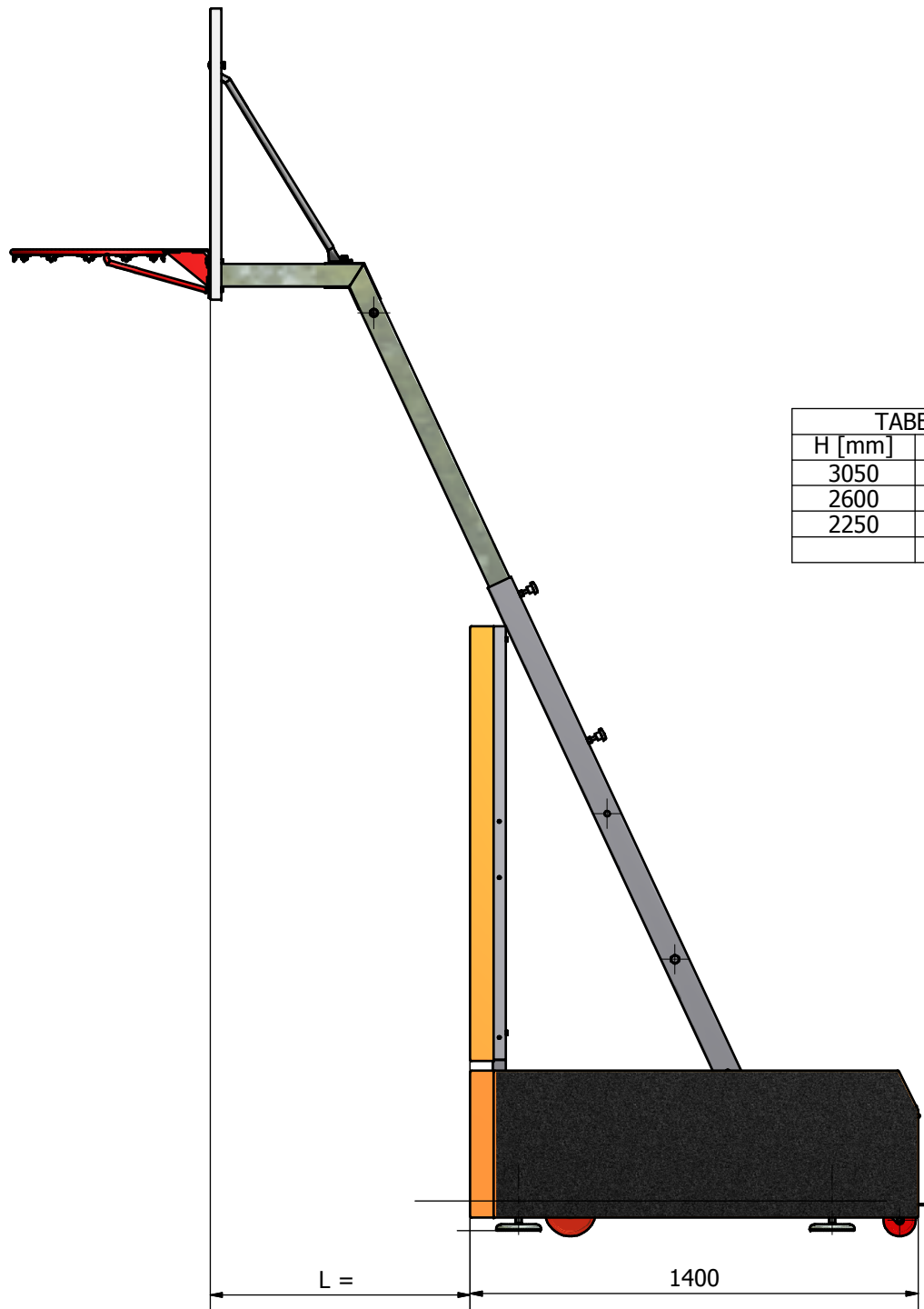
Rys. 5 / Pic 5

Zespół kotwiący / Anchorage system

Mocowanie stojaka do podłoża - wymiary studzienki. /

/ Fasting a stand to the ground - sleeve sizes.





TABELA

H [mm]	L[mm]
3050	825
2600	615
2250	450

