

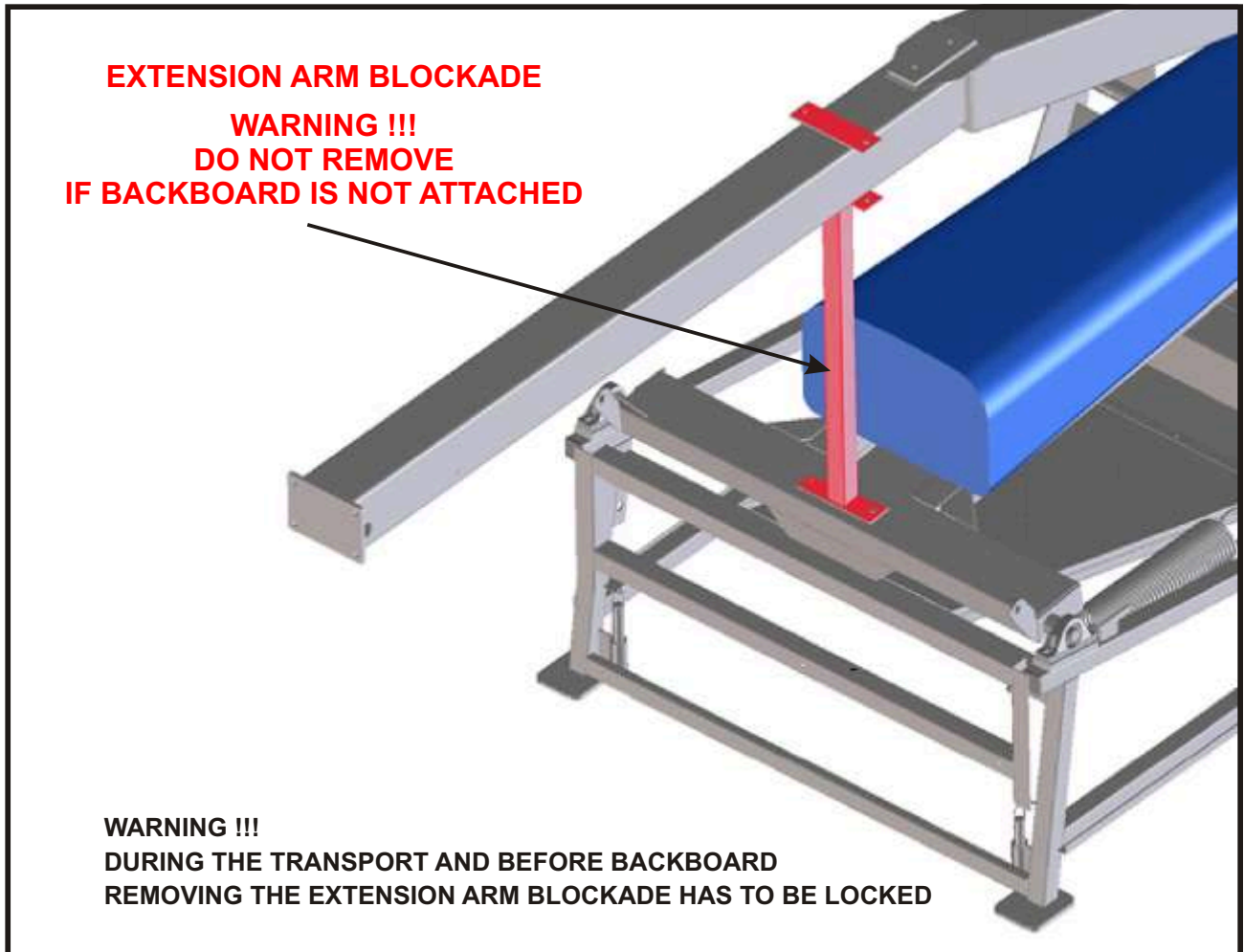
LiteShot – model 795

1 / 12



Owner manual

Before you start the assembling you have to read this instruction.
The producer does not bear responsibility for damage of the unit or injuries if the assembling is not made according to the instruction.



1. Assembly.

- 1.1. Secure the backboard (pic.3 pos.4) to the arm (pic.3 pos.11).
- 1.2. Secure the goal (pic.3 pos.12) to the metal fix-box for goal (pic.3 pos.18).
- 1.3. Put the net on the goal.
- 1.4. Secure support tubes (pic.3. pos.18) to the arm (pic.3 pos.4) and the backboard (pic.3 pos.11).
- 1.5. Remove extension arm blockade.
- 1.6. To adjust perpendicularity of the backboard to the ground you can regulate use the bean holes on the arm (pic.3 pos.13).
- 1.7. Glue the padding (pic.2 pos.16) to the backboard.
- 1.8. Secure the paddings according the pic.7 in the following order:
 - secure the front bottom padding (pic.7 pos.1)
 - secure the side bottom paddings (pic.7 pos.3a, 3b)
 - secure the front top padding (pic.7 pos.2)
 - secure the extension arm padding (pic.7 pos. 4).

2. Preparing the anchoring points.

Prepare the anchoring points very carefully, according to the instruction and using the pic.1.

- 2.1. Determine the middle (the axis) of the court (pic.1 pos."d").
- 2.2. Place the unit on the court. Make sure the axis of the unit overlies the axis of the court. Make sure the face of the board is placed at 1200mm from the end line of the court (pic.1).
- 2.3. Mark the point on the floor and drill the holes for the alignment sleeves according to the pic.1 pos."b" and pic.8.
- 2.4. Install the sleeves in the holes (pic.8.). If there is a concrete substructure under the floor use the stud-bolts to install the sleeves. If there is a wooden substructure under the floor use the wooden screws to install the sleeves.
- 2.5. The hole for the back sleeve make according to the pic.1 and pic.6.
- 2.6. Install the back sleeve in the hole. If there is a concrete substructure under the floor use the stud-bolt to install the sleeve. If there is a wooden substructure under the floor use the wooden screw to install the sleeve.
- 2.7. Bolt the anchorage hook to the substructure under the floor (pic.6 pos."a") using the stud-bolts.

3. Securing the unit to the floor. Set up the unit at the playing position.

- 3.1. Place the unit. Make sure the axis of the side alignment pins overlies the axis of the side alignment sleeves (pic.4).
- 3.2. Place the pins (pic.5) into the sleeves (pic.8), (pic.4 shows the pins put into the sleeves).
- 3.3. Rear end of the unit (pic.6) join with the anchorage hook in the back sleeve (pic.6 pos."a"), using the snap hook (pic.6 pos."c") and the screw (pic.6 pos."b").

Warning!

Remember that you have to remove the locking pin from the height adjustment device before folding the unit (pic.2 pos.14 and pic.9a.).

- 3.4. Lift up the extension arm (pic.2 pos.4) to the blocked position using the lifting holder (pic.2 pos.10), (front of the unit automatically stands on the feet as shown on the pic.5) and lock the arm as shown on the pic.9b (put the locking pin and secure with the padlock).
- 3.5. Fine tune the height of the goal at 3050 mm (+/- 5) using the bolts(pic.10 pos."a") that correct the height of the back wheels.
- 3.6. Turn the screw until you feel the resistance (pic.6 pos."b").

4. Height adjustment

To adjust the height of the goal you have to adjust the position of the wheels.

- 4.1. Slack the counter nut (pic.10 pos."b").
- 4.2. Screw in the adjusting screw (pic.10 pos."a") to lower the goal.
- 4.3. Unscrew the adjusting screw to raise the goal.
- 4.4. When the adjustment is done screw tight the counter nut (pic.10 pos."b") to block adjusting screw.

5. Fold up the unit in storing position.

- 5.1. Unblock the extension arm using the height adjustment device (pic.2 pos.6 and pic.9).
- 5.2. Fold the extension arm (pic.2 pos.4) using the holder (pic.2 pos.10).
- 5.3. Relieve the rigging screw (pic.6 pos.6).
- 5.4. Disconnect the rear end of the unit (pic.6) and the anchorage hook in the sleeve (pic.6 pos."a").
- 5.5. Fold the unit and the backboard – the wheels egress automatically (pic.4).

Warning!

After folding put 2 padlocks on the unit for security (pic.9 and 13)!

- 5.6. Take out the side alignment pins from the side alignment sleeves according to the pic.8 and pic.4.
- 5.7. Move the unit to the storage place.

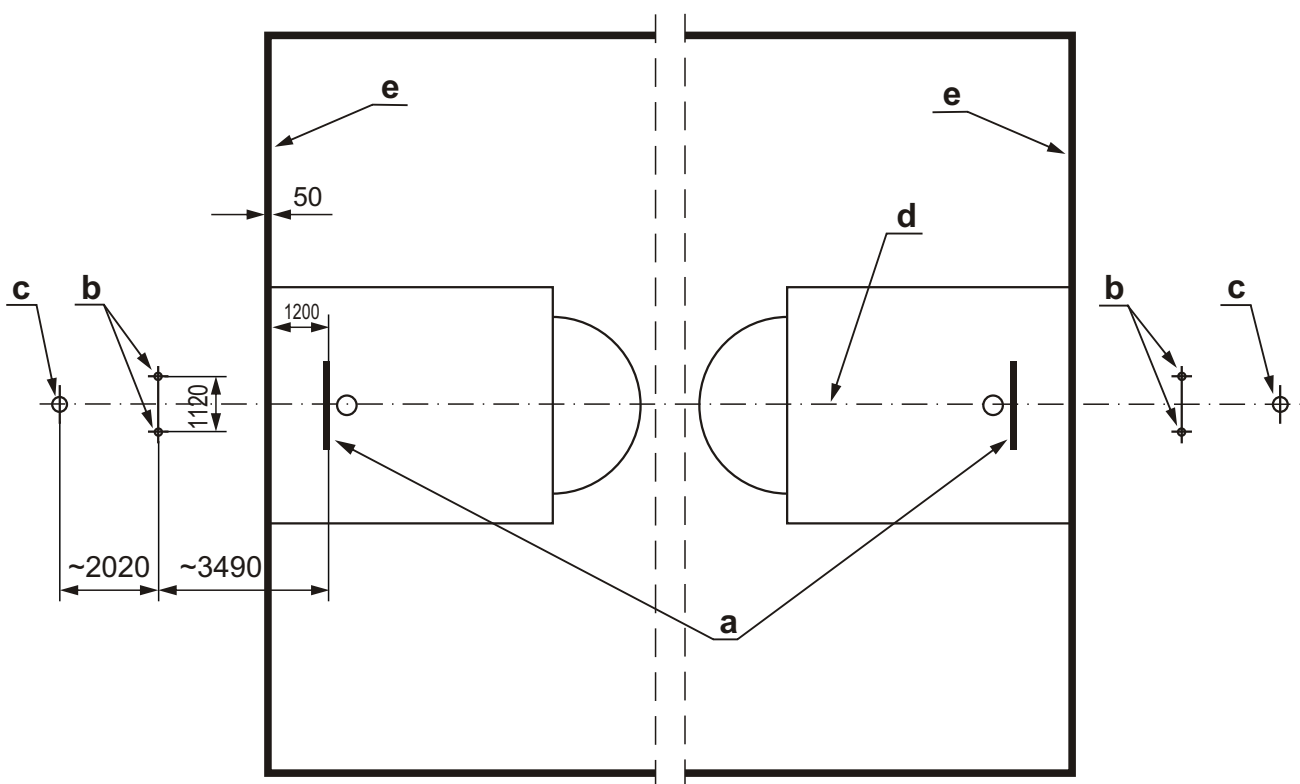
6. Maintenance.

Smear the goal mechanism and other moving elements of the unit every 12 month.

Parts check list

position	name	quantity
	Stand	1
7	Side alignment pin	2
9	Anchorage system	1
11	Backboard	1
12	Goal with net	1
13	Support tube for the backboard	1
15	Stand padding	1set
16	Backboard padding	1
A	Screw M 8x25	4
B	Screw M 8x40	2
C	Screw M 8x95	1
D	Screw M 10x35	4
E	Screw M 10x200	1
F	Cap M8	3
G	Cap M10	5
H	Flat mat 8	10
J	Flat mat 10	8

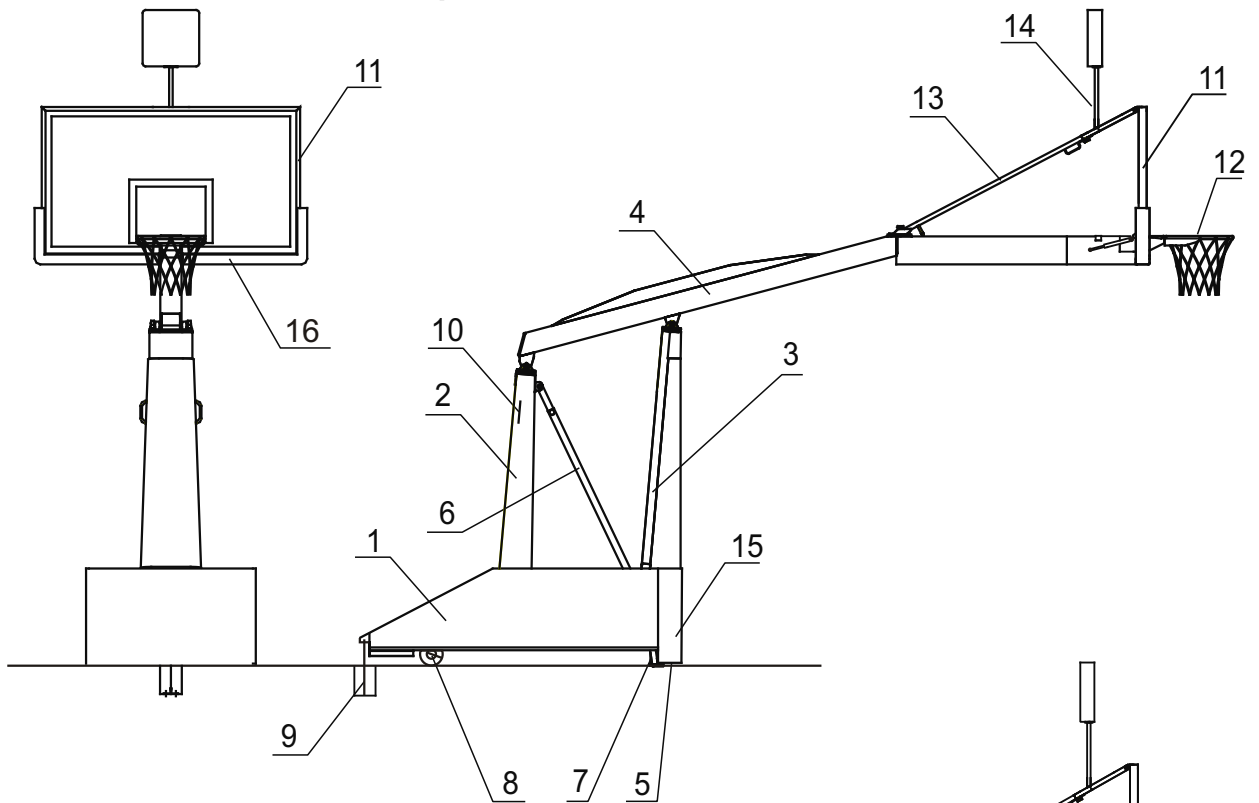
Pic.1 Floor holes location



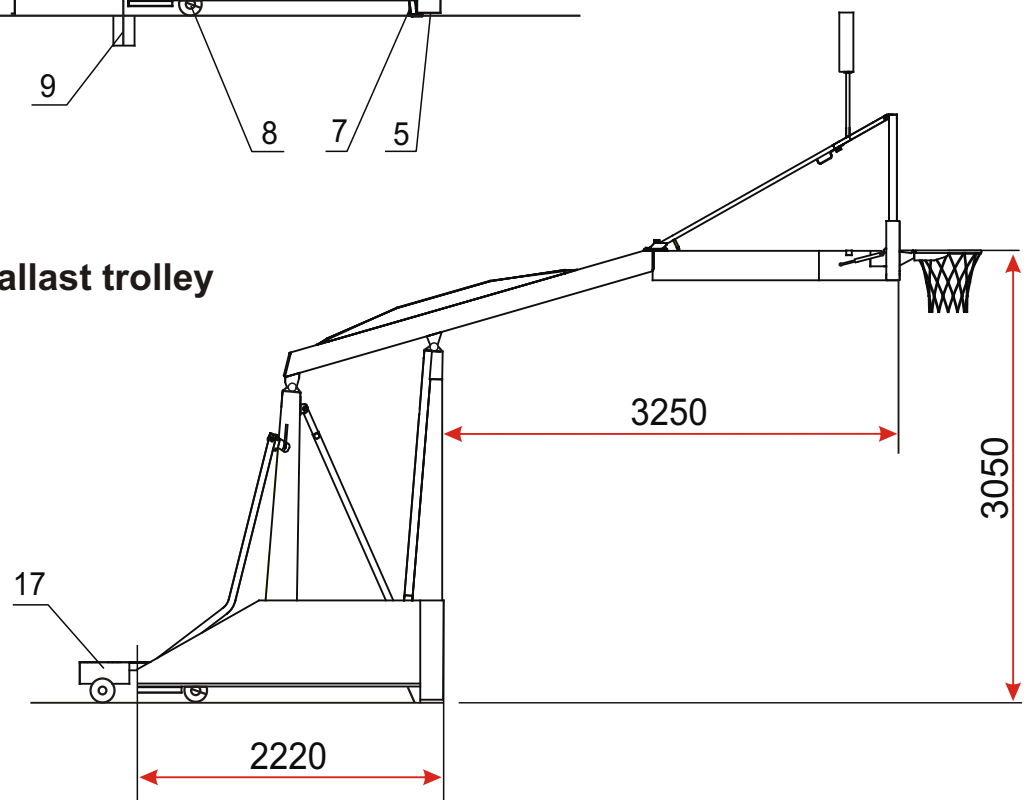
- a. Backboard
- b. Holes for side alignment sleeves
- c. Holes for back sleeves
- d. Axis of the court
- e. End line of the court.

Pic.2 LiteShot 795 - list of parts to assembly

a) fasten to the ground



b) with ballast trolley

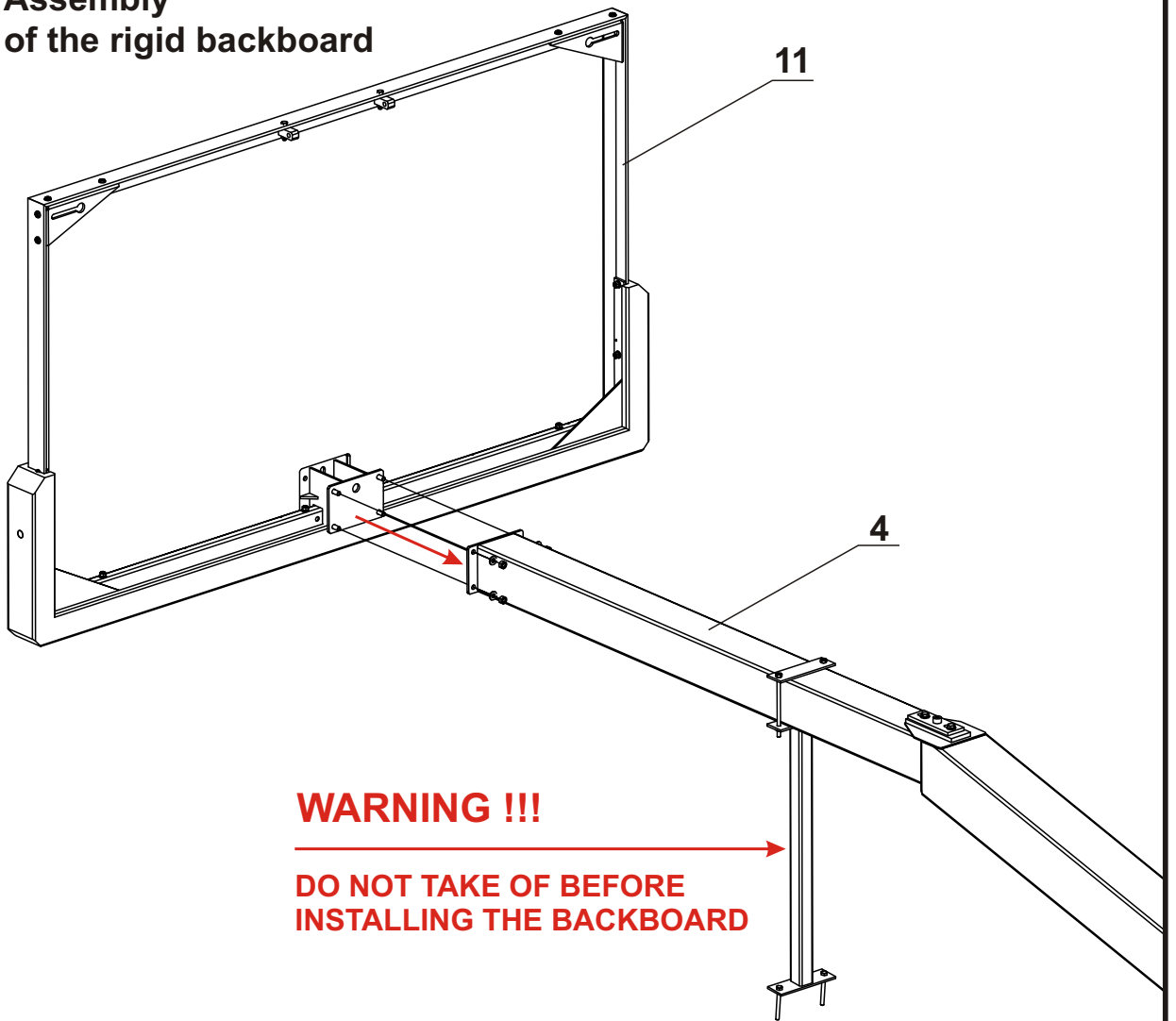


1. Base
2. Extension arm support I
3. Extension arm support II
4. Extension arm
5. Base footing
6. Blockade
7. Side alignment pin
8. Adjustment of goal height
9. Anchorage system

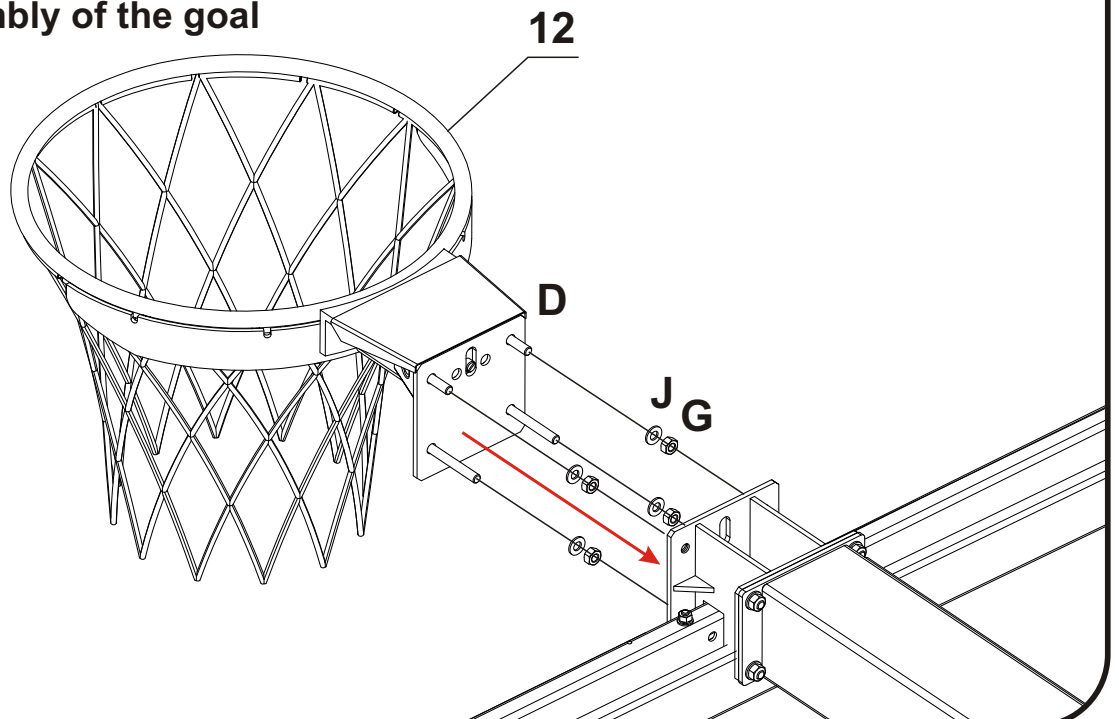
10. Lifting holder.
11. Backboard
12. Goal with net
13. Support for the backboard
14. Support for the clock
15. Paddings.
16. Backboard padding
17. Ballast trolley

Pic.3 model 795-000, 795-300

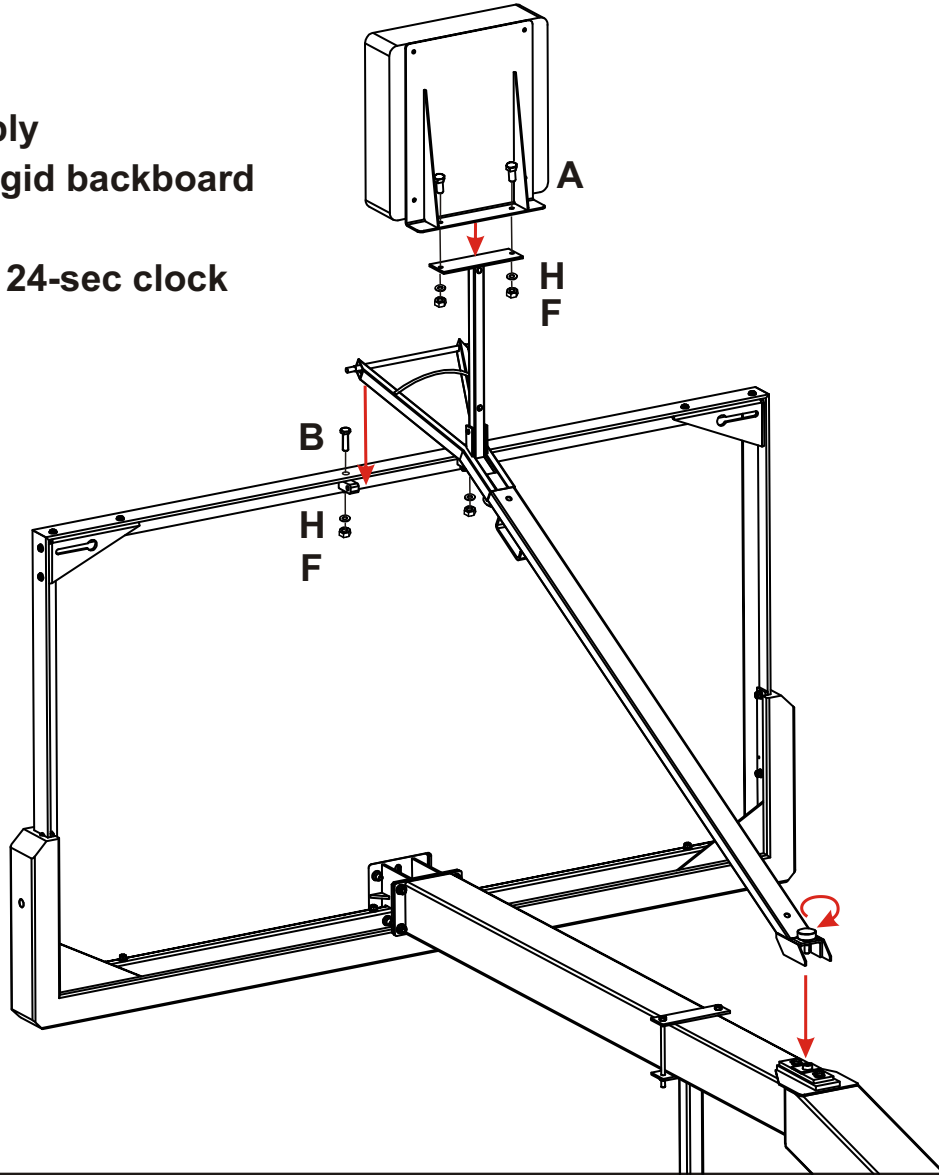
a) Assembly of the rigid backboard



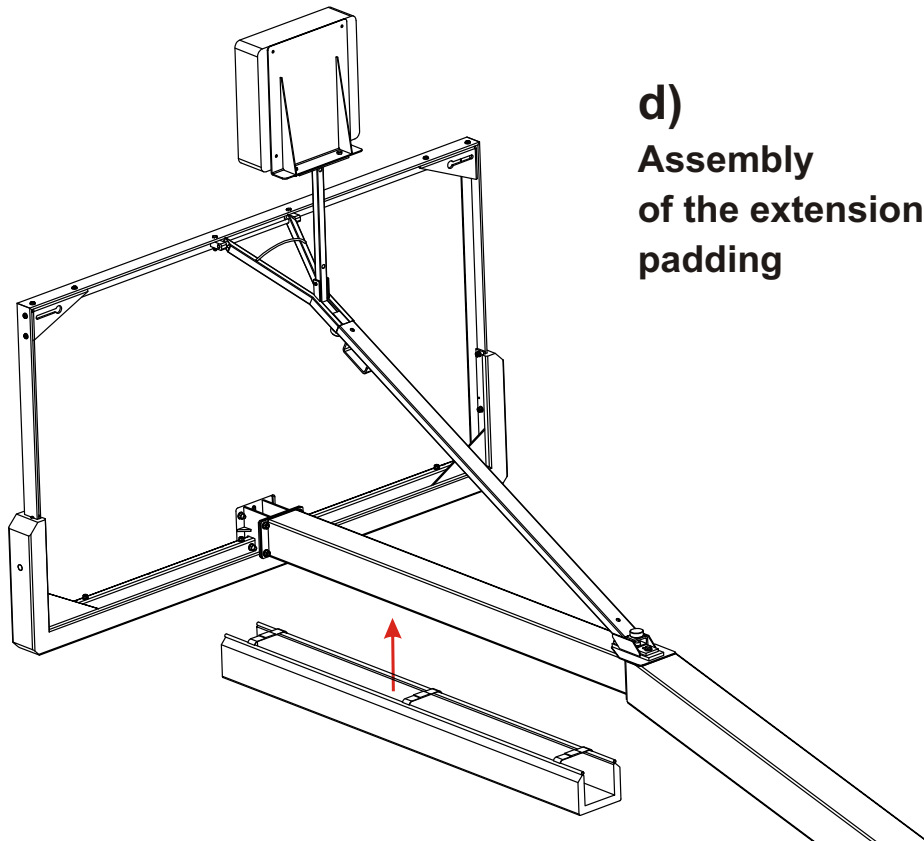
b) Assembly of the goal



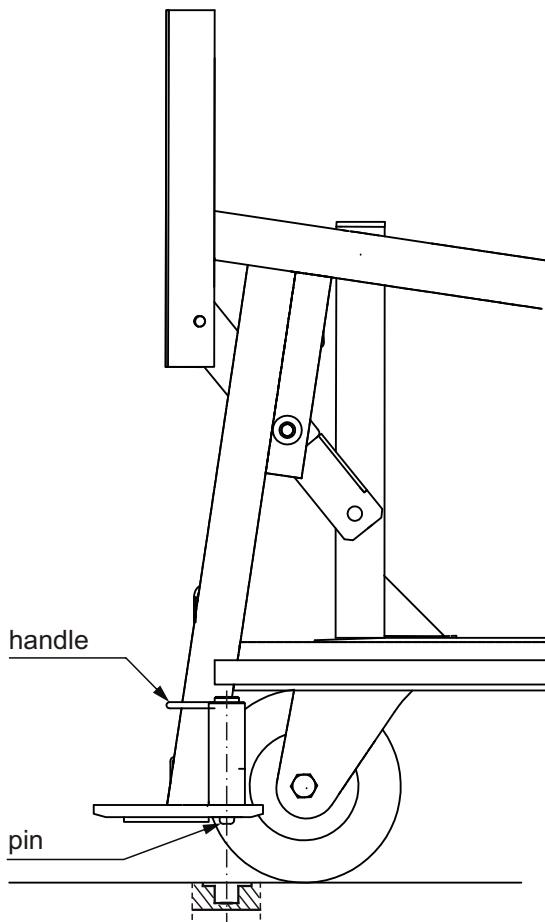
c)
Assembly
of the rigid backboard
bracket
and the 24-sec clock
bracket



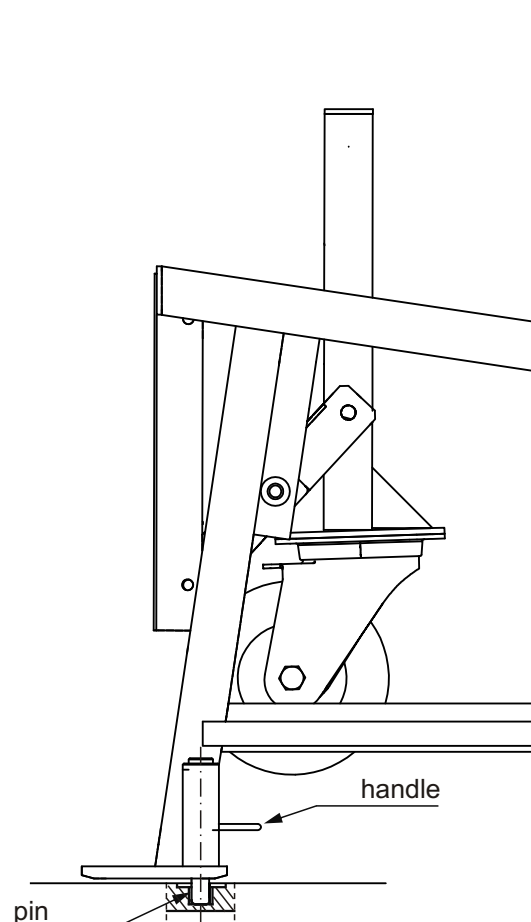
d)
Assembly
of the extension arm
padding



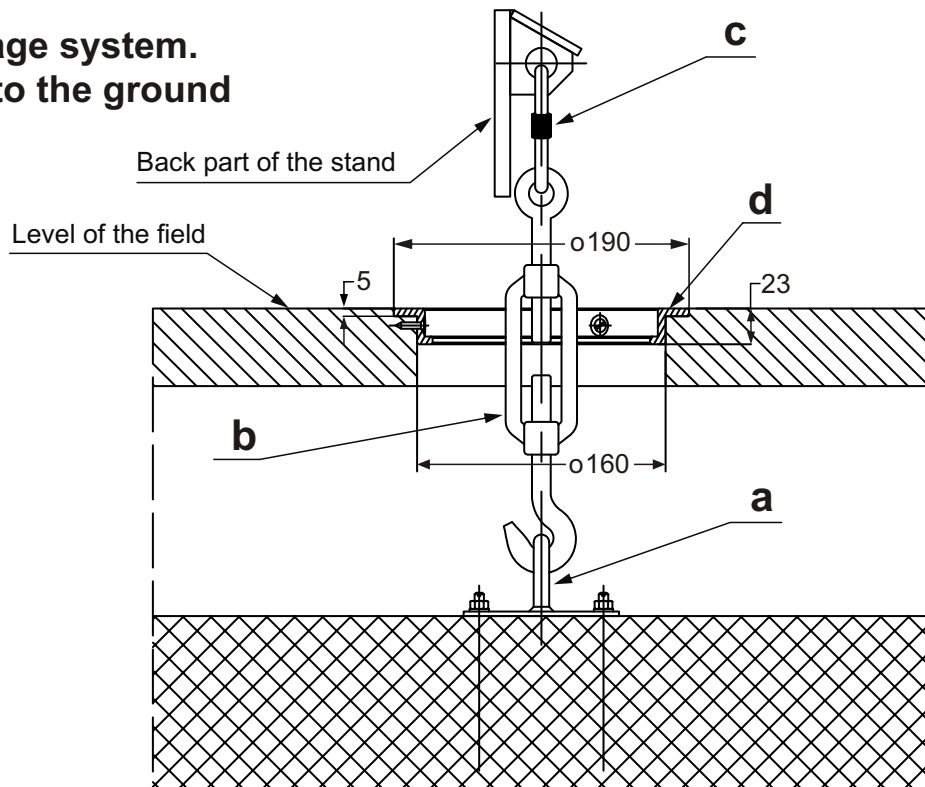
Pic.4 Sight of alignment pin and position of base footing - storing position



Pic.4 Sight of alignment pin and position of base footing - playing position



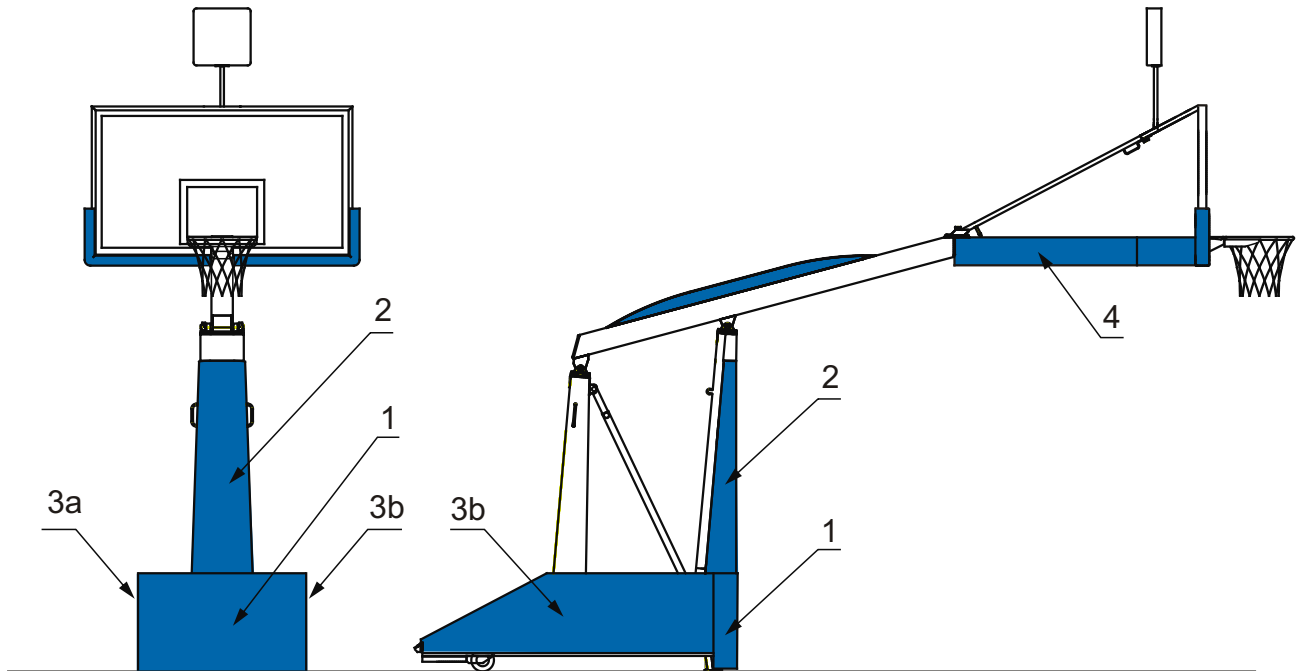
Rys.6 Anchorage system.
Fasting a stand to the ground
- sleeve sizes



Pic.7.

Assembling of the paddings.

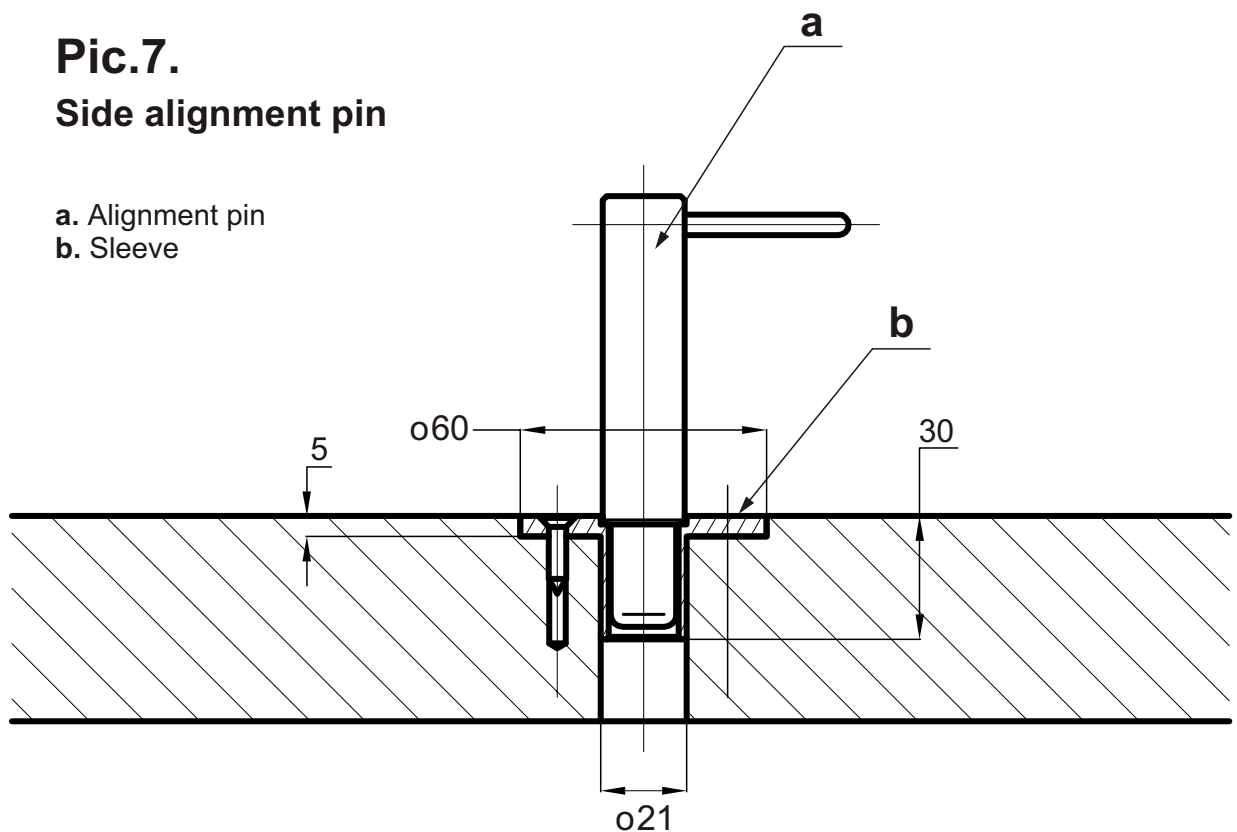
- 1. Front bottom padding.
- 2. Front top padding.
- 3a. Side bottom padding – right.
- 3b. Side bottom padding – left.
- 4. Extension arm padding.



Pic.7.

Side alignment pin

- a. Alignment pin
- b. Sleeve

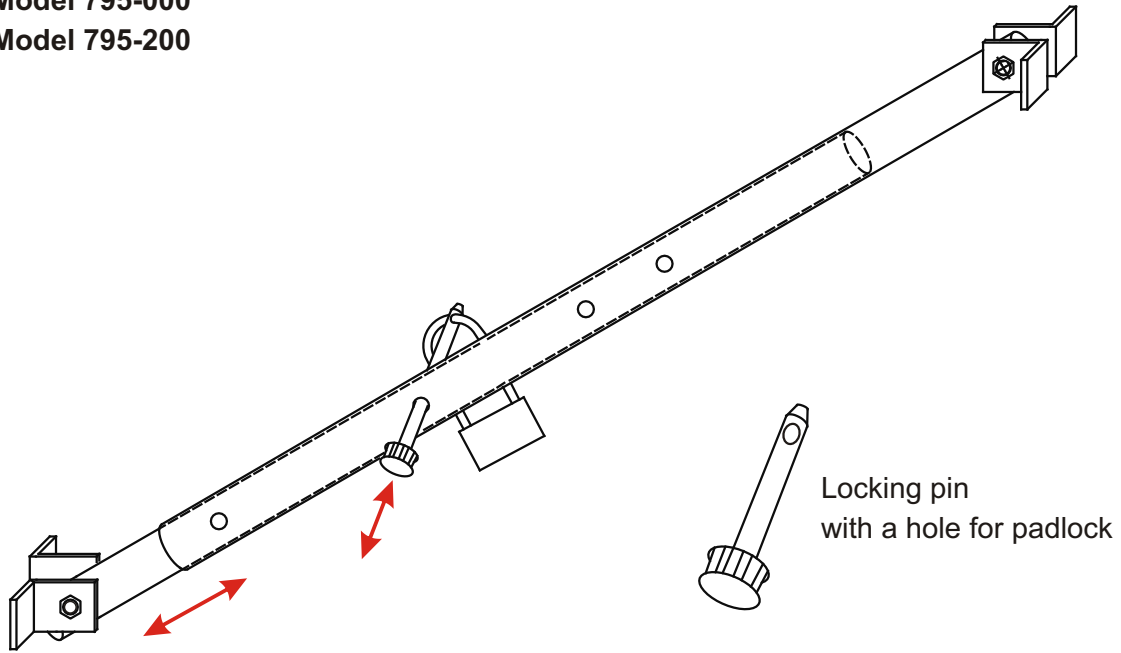


Pic.9

Blocking with the pin

Model 795-000

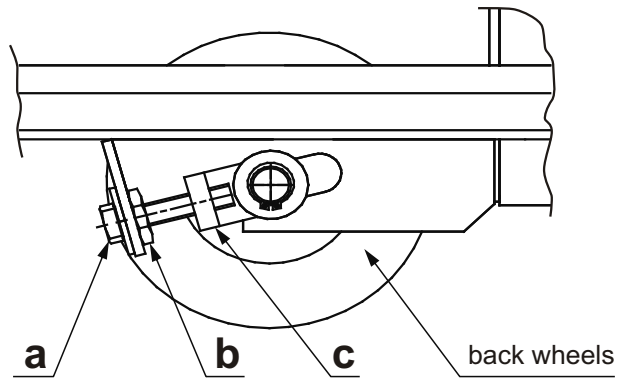
Model 795-200



Pic.10

Height adjustment

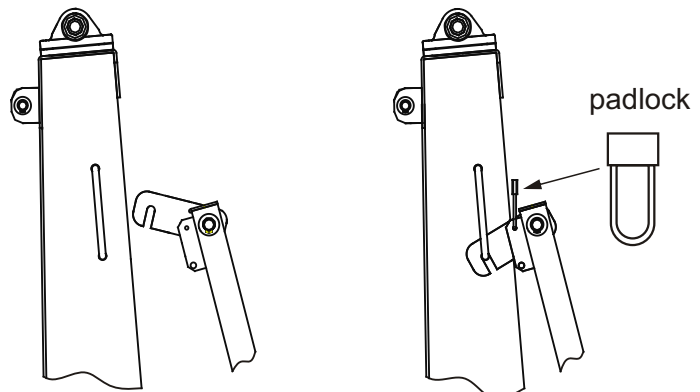
- a. Regulating screw
- b. Counter cap
- c. Regulating part



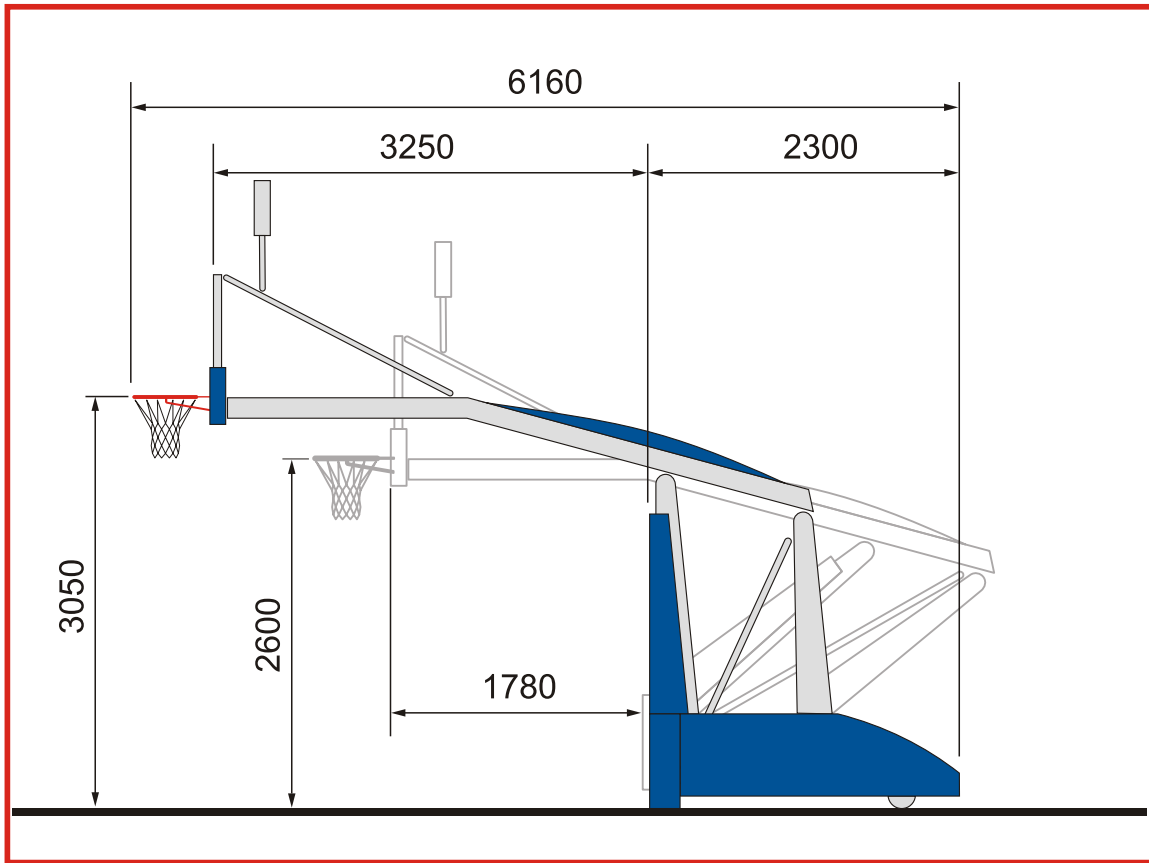
Pic.11

Fasting and securing ballast trolley

/optional/



Pic.12 LiteShot playing position



Pic.13 LiteShot storing position

